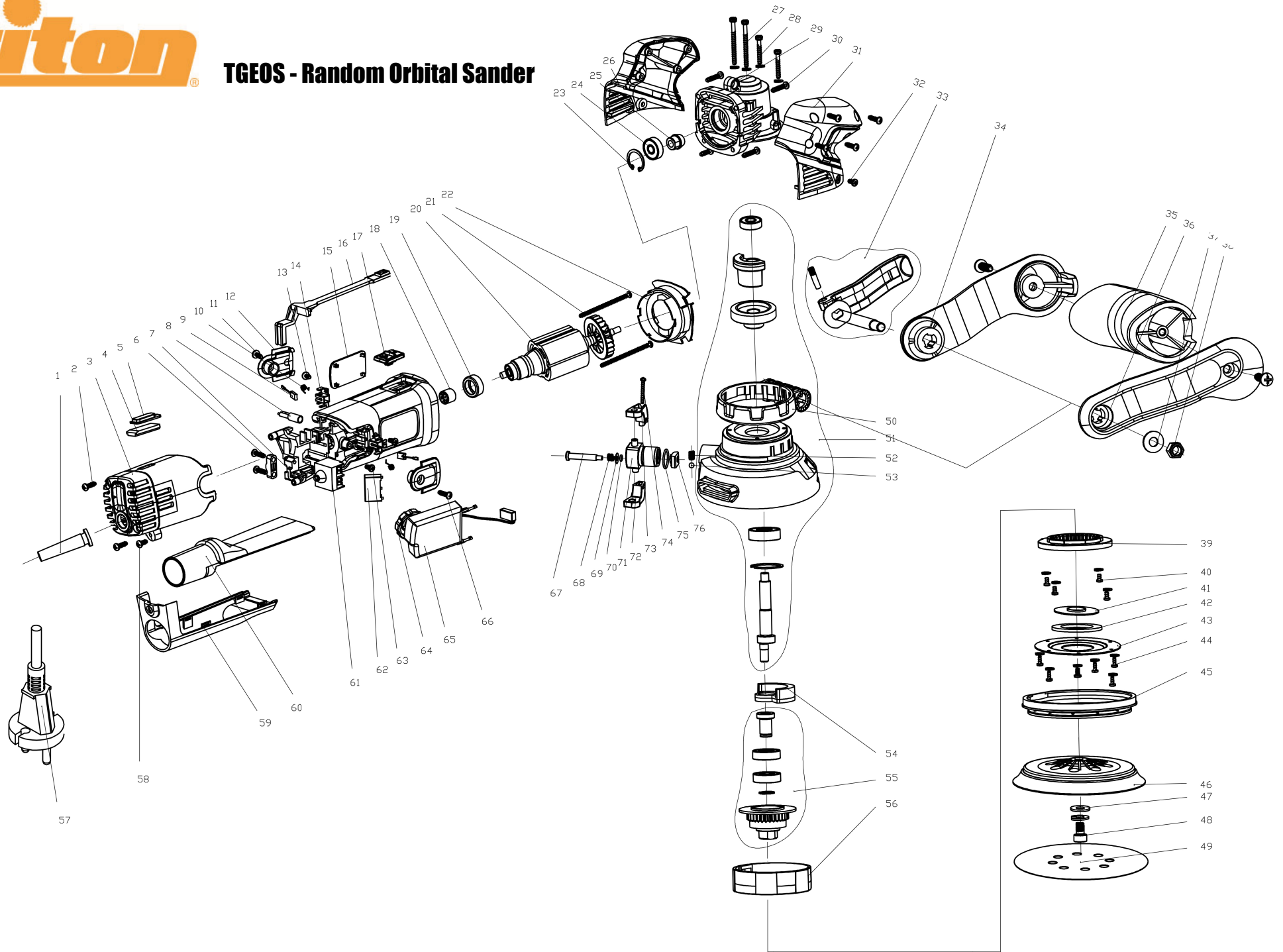




TGEOS - Random Orbital Sander





TGEOS - Random Orbital Sander

Part No.	Description	Qty
1	Power Cord Strain Relief Boot	1
2	Self Tapping Screw ST4x16	12
3	Rear Cover	1
4	Indicator Lamp Lens Clamp	1
5	Indicator Lamp Lens	1
6	Power Cord Clamp	1
7	Rear Motor Housing	1
8	Power Indicator Lamp	1
9	Carbon Brush Assembly	2
10	Carbon Brush Spring	2
11	Self Tapping Screw ST4x16	2
12	Brush Cover	2
13	Self Tapping Screw ST3*8	2
14	Brush Holder	2
15	Logo Plate	1
16	Switch Push Rod	1
17	Push Button Switch Cover	1
18	Magnet Ø13-Ø6x4.5	1
19	Bush	1
20	Motor Assembly	1
21	Self Tapping Screw ST4*65	2
22	Air Baffle	1
23	Circlip Ø22	1
24	Bearing 627	1
25	Gear	1
26	Upper Housing Left	1
27	Machine Screw M4x50 and Spring Washer Ø4	2
28	Machine Screw M4x30 and Spring Washer Ø4	2
29	Front Aluminium Shell	1
30	Self tapping screw ST4*25	2
31	Upper Housing Right	1
32	Machine Screw M4x8	2
33	Bail Handle Release Lever Assembly	1
34	Bail Handle Left	1
35	Bail Handle Grip	1
36	Bail Handle Right	1
37	Washer Ø5	1
38	Nyloc Nut M5	1



TGEOS - Random Orbital Sander

Part No.	Description	Qty
39	Ring Gear	1
40	Machine Screw M4x6 and Spring Washer Ø4	4
41	Oil Seal	1
42	Dust Seal Ring	1
43	Seal Cover Plate	1
44	Machine Screw M3x10 and Spring Washer Ø4	6
45	Rubber Ring	1
46	Base Plate	1
47	Flat gasket Ø8	1
48	Hex Cap Screw M8x15 and Spring Washer Ø8	1
49	Ø150mm Sanding Pad	1
50	Bail Handle Mounting Ring	1
51	Gearbox Assembly	1
52	Mode Selector Knob Ball Spring	1
53	Mode Selector Knob Ball Ø5	1
54	Balance Block	1
55	Connecting Shaft Assembly	1
56	Gear Seat	1
57	Cordset	1
58	Self Tapping Screw ST4x12	1
59	Dust Extraction Tube Mounting	1
60	Dust Extraction Tube	1
61	Switch	1
62	Capacitor	1
63	Self Tapping Screw ST3x6	1
64	Speed Control Selector Knob	1
65	Speed Controller	1
66	Self Tapping Screw ST4x14	2
67	Shoulder Screw M4x31 L=25	1
68	Mode Selector Spring	1
69	Washer Ø5	1
70	Sealing ring Ø4.5X1.8	1
71	Mode Selector Shaft	1
72	Mode Selector Handle Left	1
73	Mode Selector Handle Right	1
74	Self Tapping Screw ST3x25	1
75	Sealing Ring Ø17X1.5	1
76	Latch Plate	1